



Technical data:

Package size(L*W*H)-mm	355*280*85
Gross weight	1.5Kg
Power input	~24V
Output primary tip vibration excursion	≤100μm
Output tip vibration frequency	24KHz~32KHz
Output half-excursion force	≥0.5N
Input water pressure	0.1bar ~5bar(0.01MPa ~0.5MPa)
Output power	3W~75W
Environment temperature	5°C~40°C
Relative humidity range	10%~95%
Atmospheric pressure	860-1060 hpat

Main features

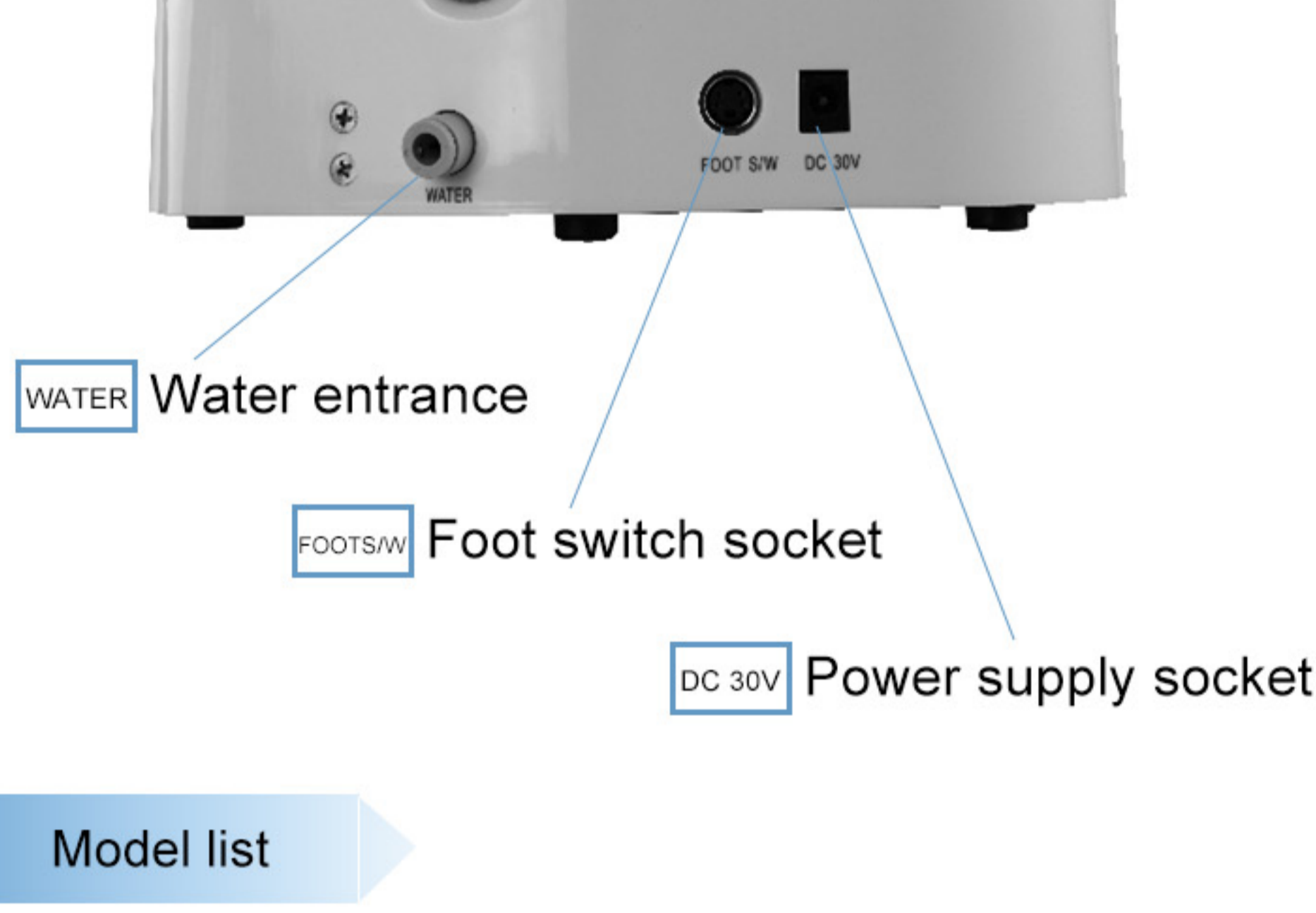
- Detachable handpiece, 135°C sterilizable
- PC control
- Automatic Frequency Tracking System
- Power Feedback System
- 5 tips attached: G1*2, G2, G4, P1
- Scaling, Perio function
- Tips and handpieces are compatible with EMS, Woodpecker UDS

Details

Front side



Back side



Model list



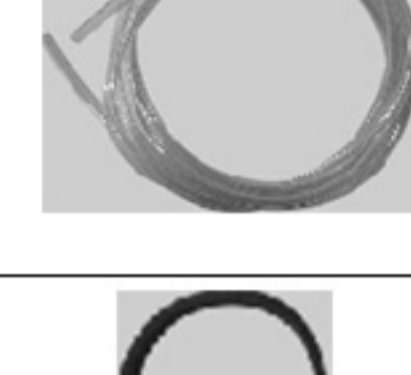
MAIN UNIT WITH FIXED HANDPIECE 1



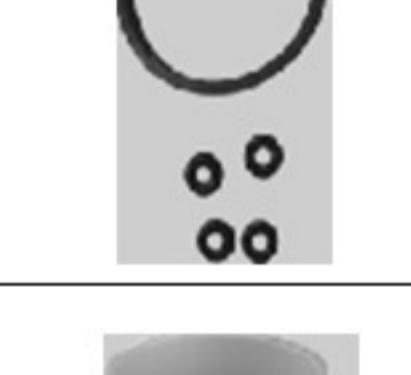
FOOT SWITCH 1



Y JOINT 1



WATER TUBE 1



DECORATIVE RING 1

WATER PROOF RING 4



TIP WRENCH 1



TRANSFORMER 1



5 TIPS SET 1

Provided Scaler Tips



To remove calculus on anterior teeth, the neck of molars, and supragingival



G1*2



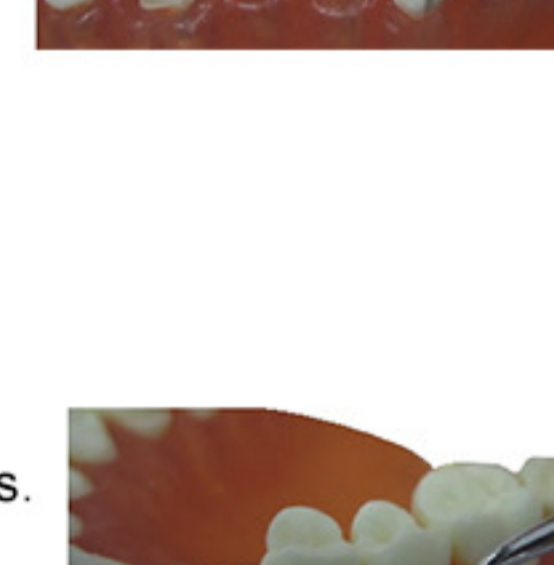
To remove supragingival heavy calculus



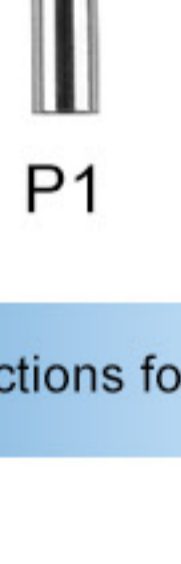
G2



To remove calculus on anterior teeth, the neck of molars, and supragingival



G4



To remove the subgingival calculus. Used for subgingival tartar elimination

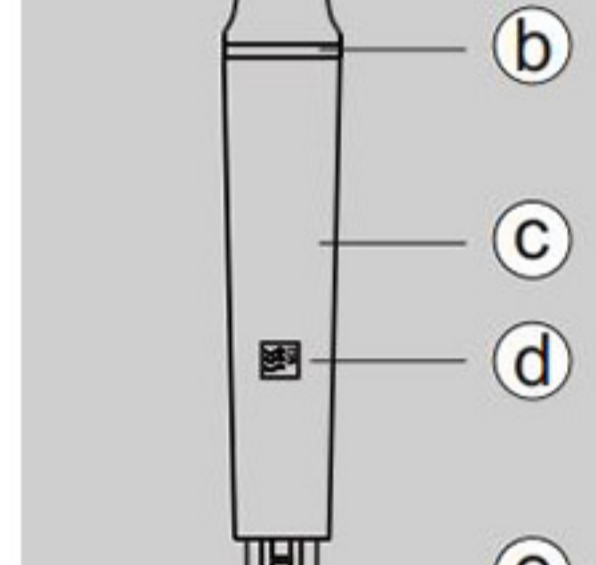


P1

Instructions for handpiece



EMS



HANDPIECE INDICATION

Combination parts

a) Nipple: The nipple can be removed. You can simply screw off the nipple and clean the pole with alcohol.

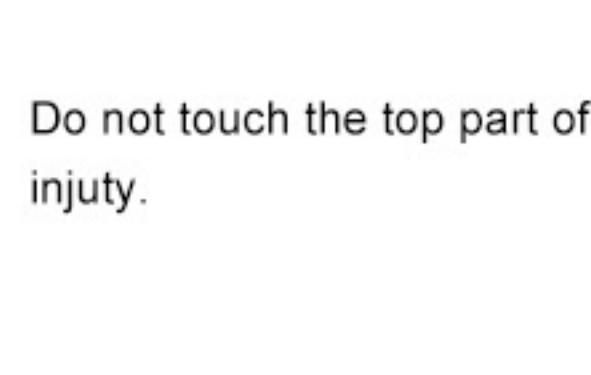
b) Handpiece decorative ring: The seal can simply be removed and cleaned with alcohol.

c) Handpiece: The main part of the whole machine, can be autoclaved under the high temperature and pressure.

d) Symbol: Denote that Can be autoclaved to the high temperature(135) and the high pressure(0.22MPa)

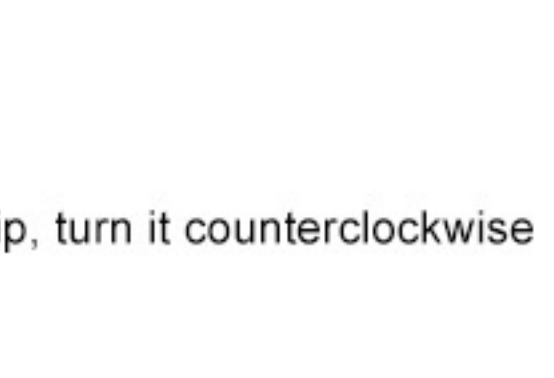
e) The connector of the cable: Connect the handpiece with water source and power supply of the main unit.

Mounting and Removing Tip



Turn Tip lightly by hand, and install it. Tip will insert from the bottom hole of Tip wrench.

Do not touch the top part of Tip to avoid an injury.



To remove the Tip, turn it counterclockwise with the Wrench.