

UMG- 610D

ORAL IMPLANT

Professional implant, High-end customization



UMG- 610D

ORAL IMPLANT

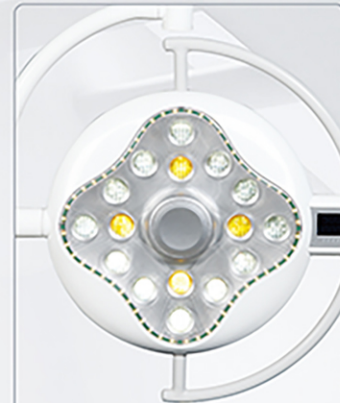
Professional implant, High-end customization



Fully automatic dental handpiece disinfection system

Cleaning, lubrication, sterilization
Safe, clean, fast

- Complete automatic cleaning, maintenance, and sterilization of the entire series of pipelines in 25 minutes.
- Thoroughly clean, reduce handpiece repair rate, and extend phone service life.
- Safe and reliable, with ISO international certification, S-level disinfection certification, and CE certification.
- Easy and worry free, automatic shutdown after disinfection.



16 LED-holes without shadow
Inductive implant operating lamp
High end, shadowless, precise

Technical parameter

Input voltage: AC12/24V

Power: 37W

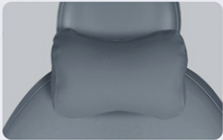
Light intensity: 80,000-100,000LX

Color temperature: 5000-5700K

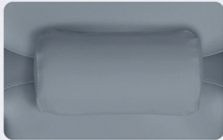
Number of LED lamps: 16/pcs

Net weight: 4KG

Which kind of dental chair are you looking for?



Memory cotton headrest



Memory cotton waist pillow



16 LED-holes shadowless inductive implant operating lamp



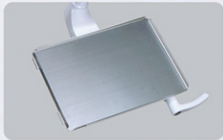
Fully automatic dental handpiece disinfection system



Separated mobile dental unit



Rotary button type auxiliary control panel



Medical stainless steel tray



Split type strong and weak suction filter



Ultra low seat design



New multifunctional foot pedal

STANDARD CONFIGURATION

1. Handpieces tubing with 4 holes (3pcs)
2. 3-way syringe with tubing (2pcs)
3. X-ray film viewer
4. High & low suction system
5. Two water storing bottles
6. Auto spittoon flushing & cup filter control system
7. Imported water & air tube
8. Removable ceramic cuspidor
9. Implant light (1pc)
10. Multifunctional foot controller (1pc)
11. Dentist stool (1pc)
12. Separated mobile dental unit
13. Touch type dentist and assistant control system

TECHNICAL PARAMETERS

- Power/voltage: a.c. 220V-230V / 50Hz; 110V-120V / 60Hz
- Water pressure: 0.2-0.4MPa / 2.0-4.0bar
- Air pressure: 0.55-0.8MPa / 5.5-8.0bar
- Air output volumn: >55L/min
- Maximum occupied space: 100cm(W) × 215cm(L)